

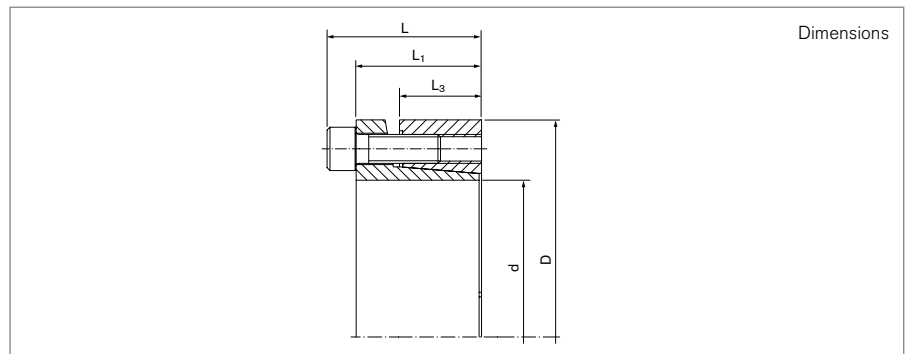
# Locking Assemblies

## RINGFEDER® RfN 7003

Two piece design with slit and single taper and without flange



self-centering	without axial displacement	with low surface pressure
----------------	----------------------------	---------------------------



Locking Assembly dimensions							Transmissible torques or axial forces		Surface pressure		Locking screws		
d	d	x	D	L	L <sub>1</sub>	L <sub>3</sub>	T	F <sub>ax</sub>	Shaft PW	Hub PN	n <sub>sc</sub>	D <sub>G</sub>	T <sub>A</sub>
mm	inch			inch			ft-lbs	lbs	psi				ft-lbs
0.750	3/4	x	1.850	1.339	1.102	0.669	260	7000	40600	17400	5	M6	10
0.875	7/8	x	1.850	1.339	1.102	0.669	295	7400	38800	17800	5	M6	10
1.000	1	x	1.969	1.339	1.102	0.669	415	8100	40600	20000	6	M6	10
1.125	1 1/8	x	2.165	1.339	1.102	0.669	460	8100	36200	18600	6	M6	10
1.188	1 3/16	x	2.165	1.339	1.102	0.669	480	8100	34100	18600	6	M6	10
1.250	1 1/4	x	2.362	1.339	1.102	0.669	700	11200	42000	21700	8	M6	10
1.375	1 3/8	x	2.362	1.339	1.102	0.669	775	11200	38800	21700	8	M6	10
1.438	1 7/16	x	2.559	1.339	1.102	0.669	805	11200	38000	21200	8	M6	10
1.500	1 1/2	x	2.559	1.339	1.102	0.669	840	11200	36500	21200	8	M6	10
1.625	1 5/8	x	2.953	1.614	1.299	0.787	1500	15700	44200	24300	7	M8	26
1.750	1 3/4	x	2.953	1.614	1.299	0.787	1610	15700	41300	24300	7	M8	26
1.875	1 7/8	x	2.953	1.614	1.299	0.787	1700	19100	39300	22900	7	M8	26
1.938	1 15/16	x	3.150	1.614	1.299	0.787	1790	19100	37400	22900	7	M8	26
2.000	2	x	3.150	1.614	1.299	0.787	1790	19100	36800	22900	7	M8	26
2.125	2 1/8	x	3.346	1.614	1.299	0.787	2180	22500	39600	25100	8	M8	26
2.188	2 3/16	x	3.346	1.614	1.299	0.787	2250	22500	38800	25100	8	M8	26
2.250	2 1/4	x	3.543	1.614	1.299	0.787	2320	22500	37000	23600	8	M8	26
2.375	2 3/8	x	3.543	1.614	1.299	0.787	2470	22500	35200	23600	8	M8	26
2.438	2 7/16	x	3.740	1.614	1.299	0.787	2840	24700	38500	25100	9	M8	26
2.500	2 1/2	x	3.740	1.614	1.299	0.787	2910	24700	37500	25100	9	M8	26
2.563	2 9/16	x	3.740	1.614	1.299	0.787	3010	24700	36700	25100	9	M8	26
2.688	2 11/16	x	4.331	1.969	1.575	0.945	4500	36000	41300	26500	8	M10	52
2.750	2 3/4	x	4.331	1.969	1.575	0.945	4630	36000	40300	25800	8	M10	52
2.875	2 7/8	x	4.528	1.969	1.575	0.945	4790	36000	38400	24300	8	M10	52
2.938	2 15/16	x	4.528	1.969	1.575	0.945	4930	36000	37400	24300	8	M10	52
3.000	3	x	4.724	1.969	1.575	0.945	5260	36000	36000	24300	8	M10	52

To continue see next page

### Locking Assemblies RINGFEDER® RfN 7003

Locking Assembly dimensions							Transmissible torques or axial forces		Surface pressure		Locking screws		
d	d	x	D	L	L <sub>1</sub>	L <sub>3</sub>	T	F <sub>ax</sub>	Shaft p <sub>w</sub>	Hub p <sub>n</sub>	n <sub>sc</sub>	D <sub>G</sub>	T <sub>A</sub>
mm	inch			inch			ft-lbs	lbs	psi				ft-lbs
3.250	3 1/4	x	4.921	1.969	1.575	0.945	6230	40500	38500	25800	9	M10	52
3.375	3 3/8	x	4.921	1.969	1.575	0.945	6450	40500	37400	25800	9	M10	52
3.438	3 7/16	x	5.118	1.969	1.575	0.945	6480	40500	37000	24300	9	M10	52
3.500	3 1/2	x	5.118	1.969	1.575	0.945	6700	40500	36000	24300	9	M10	52
3.750	3 3/4	x	5.315	1.969	1.575	0.945	7800	45000	37400	25800	10	M10	52
3.938	3 15/16	x	5.709	2.205	1.732	1.024	9870	54000	38800	27200	8	M12	92
4.000	4	x	5.709	2.205	1.732	1.024	9960	54000	38200	27200	8	M12	92
4.438	4 7/16	x	6.102	2.205	1.732	1.024	10800	54000	34500	25800	8	M12	92
4.750	4 3/4	x	6.496	2.205	1.732	1.024	13200	56200	36000	25800	9	M12	92
4.938	4 15/16	x	7.087	2.520	2.047	1.339	18400	78700	35800	24300	12	M12	92
5.000	5	x	7.087	2.520	2.047	1.339	19100	78700	34500	24300	12	M12	92
5.438	5 7/16	x	7.480	2.677	2.126	1.339	19900	78700	30100	21400	9	M14	140
5.938	5 15/16	x	7.874	2.677	2.126	1.339	24300	90000	33000	24300	10	M14	140
6.438	6 7/16	x	8.858	3.071	2.520	1.732	33200	112000	26100	18800	12	M14	140
6.938	6 15/16	x	9.252	3.071	2.520	1.732	34600	112000	24600	18800	12	M14	140

More sizes on request

### Explanation

<b>d</b> = Inner diameter (decimal notation)	<b>L<sub>3</sub></b> = Width of ring	<b>p<sub>n</sub></b> = Surface pressure on hub at given T <sub>A</sub>
<b>d</b> = Inner diameter	<b>T</b> = Transmissible torque at given T <sub>A</sub>	<b>n<sub>sc</sub></b> = Quantity of screws
<b>D</b> = Outer diameter	<b>F<sub>ax</sub></b> = Transmissible axial force	<b>D<sub>G</sub></b> = Thread
<b>L</b> = Overall length	<b>p<sub>w</sub></b> = Surface pressure on shaft at given T <sub>A</sub>	<b>T<sub>A</sub></b> = Tightening torque of the clamping screws
<b>L<sub>1</sub></b> = Overall length (without screws)		

### Ordering example

Locking assembly	d	D
RfN 7003	0.875	1.850

#### Technical Information

- Surface finishes: Shaft and hub bores R<sub>a</sub> ≤ 1,6 μm
- Tolerances: Shaft: h8 · Hub: H8

Further information on  
**RINGFEDER® RfN 7003**  
 on [www.ringfeder.com](http://www.ringfeder.com)

#### Disclaimer of liability

All technical details and notes are non-binding and cannot be used as a basis for legal claims. The user is obligated to determine whether the represented products meet his requirements. We reserve the right carry out modifications at any time in the interests of technical progress.