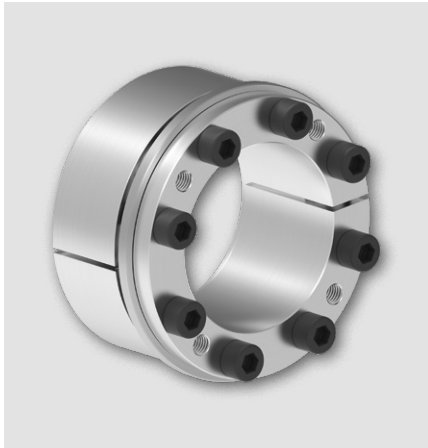


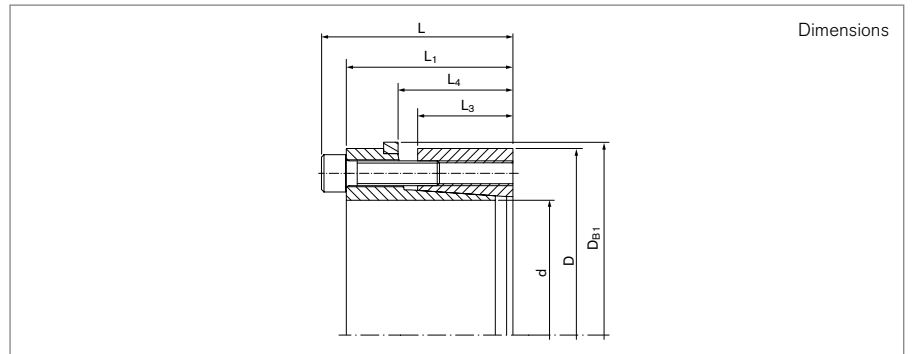
Locking Assemblies

RINGFEDER® RfN 7007

Two piece design similar to RfN 7004



self-centering without axial displacement with low surface pressure



Locking Assembly dimensions									Transmissible torques or axial forces		Surface pressure		Locking screws		
d	d	x	D	DB1	L	L1	L3	L4	T	F _{ax}	Shaft PW	Hub PN	n _{Sc}	D _G	T _A
inch	inch			inch					ft-lbs	lbs	psi				ft-lbs
0.750	3/4	x	1.850	2.087	1.772	1.535	1.024	1.220	235	7400	26000	10400	6	M6	13
0.875	7/8	x	1.850	2.087	1.772	1.535	1.024	1.220	270	7400	22500	10400	6	M6	13
1.000	1	x	1.969	2.205	1.772	1.535	1.024	1.220	310	7400	19700	9900	6	M6	13
1.125	1 1/8	x	2.165	2.402	1.772	1.535	1.024	1.220	345	7400	17500	9000	6	M6	13
1.188	1 3/16	x	2.165	2.402	1.772	1.535	1.024	1.220	370	7400	16400	9000	6	M6	13
1.250	1 1/4	x	2.362	2.598	1.772	1.535	1.024	1.220	525	9890	20600	11000	8	M6	13
1.375	1 3/8	x	2.362	2.598	1.772	1.535	1.024	1.220	575	9890	18800	11000	8	M6	13
1.438	1 7/16	x	2.559	2.795	1.772	1.535	1.024	1.220	595	9890	18100	10600	8	M6	13
1.500	1 1/2	x	2.559	2.795	1.772	1.535	1.024	1.220	625	9890	17300	10100	8	M6	13
1.625	1 5/8	x	2.953	3.189	2.165	1.850	1.181	1.417	940	13700	18600	10300	6	M8	30
1.750	1 3/4	x	2.953	3.189	2.165	1.850	1.181	1.417	1010	13700	17300	10300	6	M8	30
1.875	1 7/8	x	2.953	3.386	2.165	1.850	1.181	1.417	1270	18200	20000	11900	6	M8	30
1.938	1 15/16	x	3.150	3.386	2.165	1.850	1.181	1.417	1490	18200	20700	12900	8	M8	30
2.000	2	x	3.150	3.583	2.165	1.850	1.181	1.417	1550	18200	20000	12600	8	M8	30
2.125	2 1/8	x	3.346	3.583	2.165	1.850	1.181	1.417	1550	18200	19900	12600	8	M8	30
2.188	2 3/16	x	3.346	3.583	2.165	1.850	1.181	1.417	1640	18200	18800	12200	8	M8	30
2.250	2 1/4	x	3.543	3.780	2.165	1.850	1.181	1.417	1710	18200	18100	11900	8	M8	30
2.375	2 3/8	x	3.543	3.780	2.165	1.850	1.181	1.417	1790	18200	17300	11500	8	M8	30
2.438	2 7/16	x	3.740	3.976	2.165	1.850	1.181	1.417	1790	18200	16700	11200	8	M8	30
2.500	2 1/2	x	3.740	3.976	2.165	1.850	1.181	1.417	1860	18200	16700	11200	8	M8	30
2.563	2 9/16	x	3.740	3.976	2.165	1.850	1.181	1.417	1940	18200	15900	10900	8	M8	30
2.688	2 11/16	x	4.331	4.567	2.835	2.441	1.575	1.811	2710	29400	17100	11200	8	M10	61
2.750	2 3/4	x	4.331	4.567	2.835	2.441	1.575	1.811	3370	29400	18000	11500	8	M10	61
2.875	2 7/8	x	4.528	4.764	2.835	2.441	1.575	1.811	3510	29400	17300	11900	8	M10	61
2.938	2 15/16	x	4.528	4.764	2.835	2.441	1.575	1.811	3620	29400	16800	10900	8	M10	61
3.000	3	x	4.724	4.961	2.835	2.441	1.575	1.811	3860	29400	15700	10400	8	M10	61

To continue see next page

Locking Assemblies RINGFEDER® RfN 7007

Locking Assembly dimensions									Transmissible torques or axial forces		Surface pressure		Locking screws		T _A ft-lbs
d	d	x	D	D _{B1}	L	L ₁	L ₃	L ₄	T	F _{ax}	Shaft p _w	Hub p _n	n _{sc}	D _G	
inch	inch			inch					ft-lbs	lbs	psi				
3.250	3 1/4	x	4.921	5.157	2.835	2.441	1.575	1.811	4680	36600	15500	10900	10	M10	61
3.375	3 3/8	x	4.921	5.157	2.835	2.441	1.575	1.811	5120	36600	18400	12600	10	M10	61
3.438	3 7/16	x	4.921	5.354	2.835	2.441	1.575	1.811	5330	36600	17700	12200	10	M10	61
3.500	3 1/2	x	5.118	5.354	2.835	2.441	1.575	1.811	5420	36600	17400	12000	10	M10	61
3.750	3 3/4	x	5.315	5.551	2.835	2.441	1.575	1.811	5720	36600	16500	11600	10	M10	61
3.938	3 15/16	x	5.709	5.945	3.504	3.031	1.811	2.047	7210	44100	16400	11300	8	M12	107
4.000	4	x	5.709	5.945	3.504	3.031	1.811	2.047	7500	44100	17100	11700	8	M12	107
4.438	4 7/16	x	6.102	6.339	3.504	3.031	1.811	2.047	7930	44100	14800	10600	8	M12	107
4.750	4 3/4	x	6.496	6.732	3.504	3.031	1.811	2.047	10800	54900	17000	12300	10	M12	107
4.938	4 15/16	x	7.087	7.323	3.504	3.031	1.811	2.047	12400	65900	17700	12800	12	M12	107
5.000	5	x	7.087	7.323	3.504	3.031	1.811	2.047	14100	65900	18800	13600	12	M12	107
5.438	5 7/16	x	7.480	7.717	3.858	3.307	2.008	2.323	17400	75800	18100	13300	10	M14	170
5.938	5 15/16	x	7.874	8.110	3.858	3.307	2.008	2.323	22400	91000	20300	15200	12	M14	170
6.438	6 7/16	x	8.858	9.094	3.858	3.307	2.008	2.323	29600	106000	20900	15800	14	M14	170
6.938	6 15/16	x	9.252	9.488	3.858	3.307	2.008	2.323	31300	106000	19700	15100	14	M14	170

More sizes on request

Explanation

d = Inner diameter (decimal notation)	L₃ = Width of ring	n_{sc} = Quantity of screws
d = Inner diameter	L₄ = Installation length up to collar	D_G = Thread
D = Outer diameter	T = Transmissible torque at given T _A	T_A = Tightening torque of the clamping screws
D_{B1} = Collar outer diameter	F_{ax} = Transmissible axial force	
L = Overall length	p_w = Surface pressure on shaft at given T _A	
L₁ = Overall length (without screws)	p_n = Surface pressure on hub at given T _A	

Ordering example

Locking assembly	d	D
RfN 7007	4.438	6.102

Technical Information

- Surface finishes: Shaft and hub bores R_a ≤ 1,6 μm
- Tolerances: Shaft: h8 · Hub: H8

Further information on
RINGFEDER® RfN 7007
 on www.ringfeder.com

Disclaimer of liability

All technical details and notes are non-binding and cannot be used as a basis for legal claims. The user is obligated to determine whether the represented products meet his requirements. We reserve the right carry out modifications at any time in the interests of technical progress.